

TN0089E [NVE] Updating dome firmware for IPC4100 and IPC4500.doc

Applies to: IPC4100 and IPC4500 which has kernel firmware version k596 or higher.

Level: Public

Summary

This article describes dome firmware updating procedure.

Detailed Information

Prerequisite to updating dome firmware

- Baud rate of the camera should be set to 9600
- The protocol of the camera should be set to one among cyber scan I, cyber scan II and pelco-d.
- The kernel firmware version should be K569 or higher.

For setting of the camera, please refer IPC4100 and IPC4500 hardware manual, section *DIP Switch Setting*.

The dome firmwares are as follows according to each model:

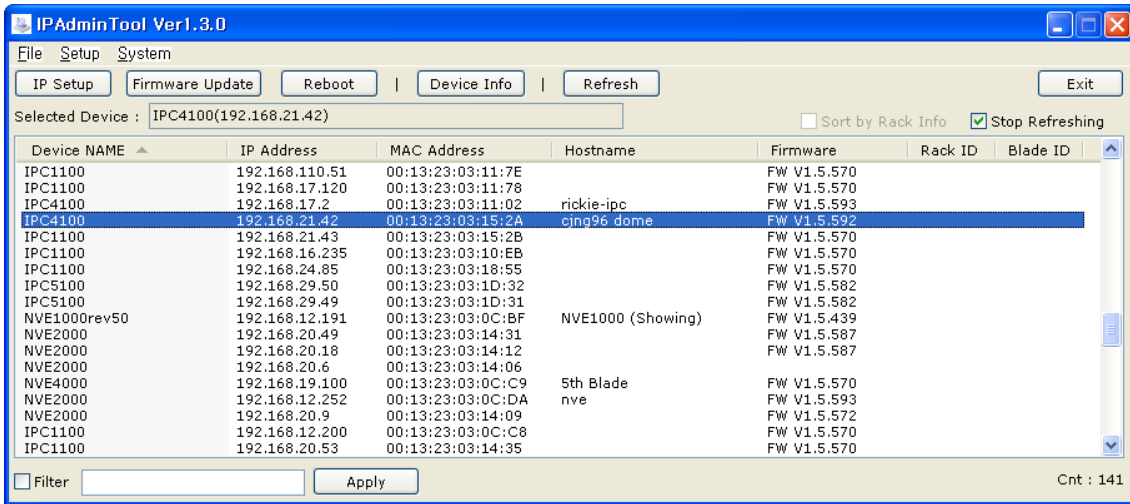
IPC4100 : GHSD7425D_VxxxDE_F_STD.bin.

IPC4500 : GCP7425D_VxxxQE_F_STD.bin.

IPC5100 : GHSD7410D_VxxxTE_F_STD.bin.

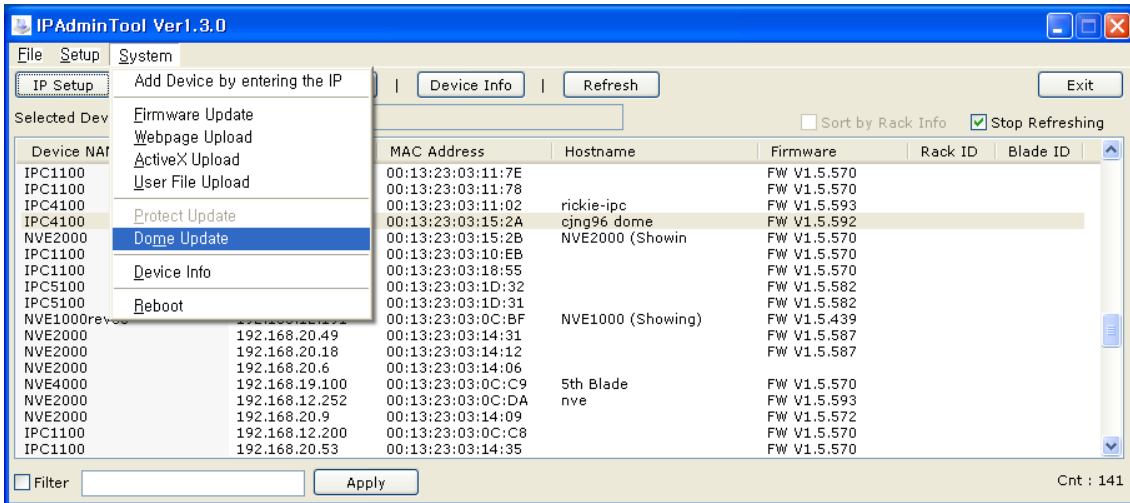
1. Updating dome firmware when it is lower than K600.

1. Launch IPAdminTool and find the camera to update dome firmware.

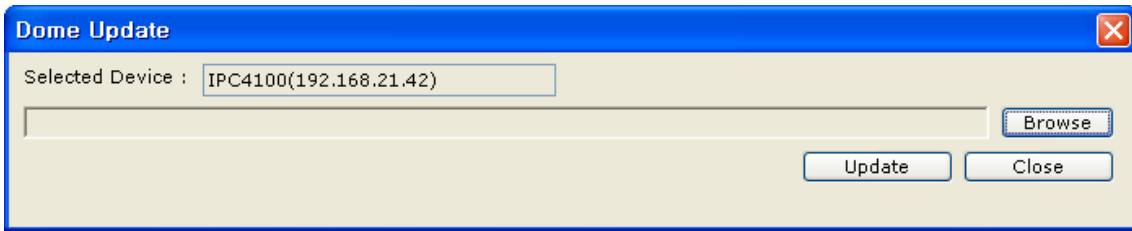


In this exercise, we use IPC4100 which IP address is 192.168.21.42.

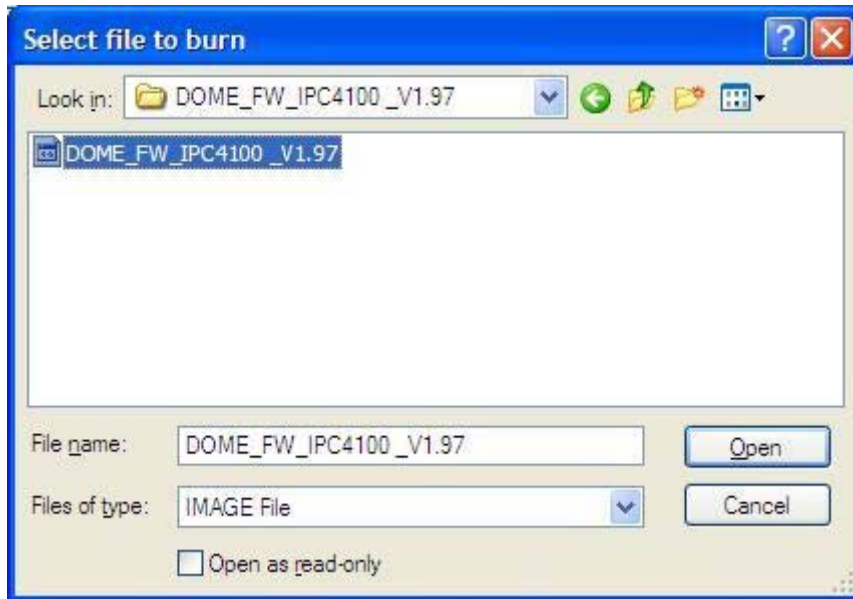
2. Click *System* → *Dome Update*



3. *Dome Update* dialog box appears. Click *Browse* to choose dome firmware.



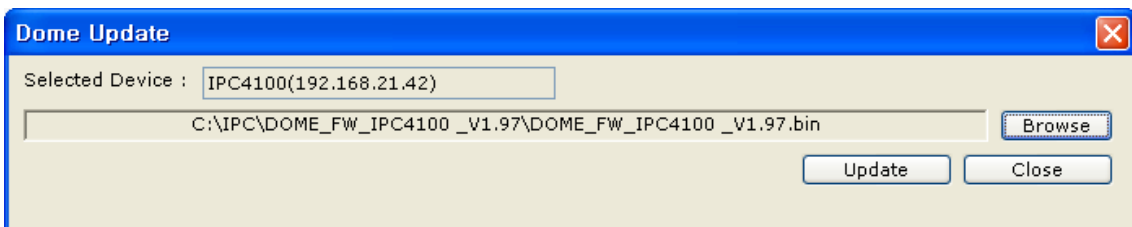
4. Choose IPC4100 dome firmware file.



Caution

Do not upload the dome firmware that is a different with the camera type because there is no verification routine. If you upload the wrong dome firmware, the camera will not work..

5. Now click *Update* button.



The dome firmware updating takes about 3 minutes.

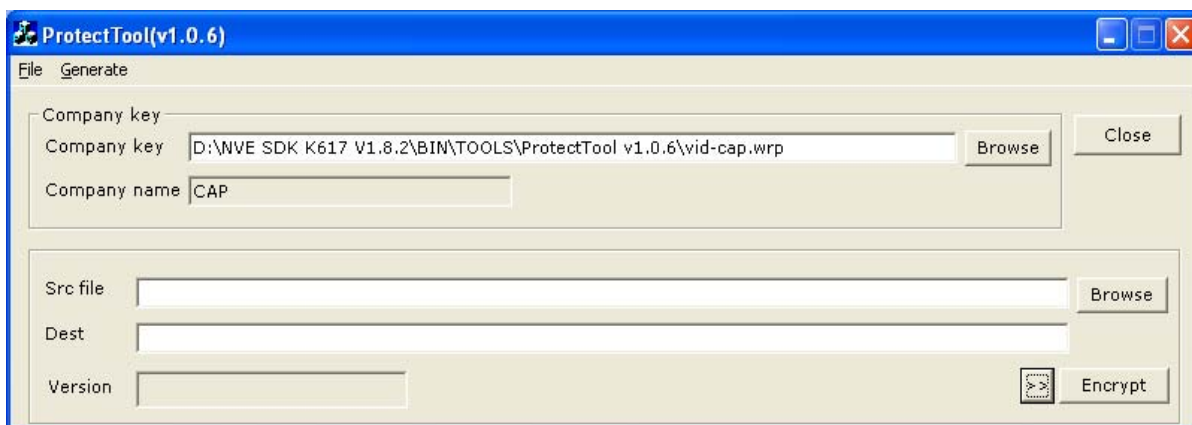
2. Updating dome firmware when it is higher than K 600.

When the firmware version is higher than K600, first you must encrypt the dome firmware with the Protect Tool. Before updating the dome firmware, you must check the file name of dome firmware. If you try to update the wrong the dome firmware, it won't update.

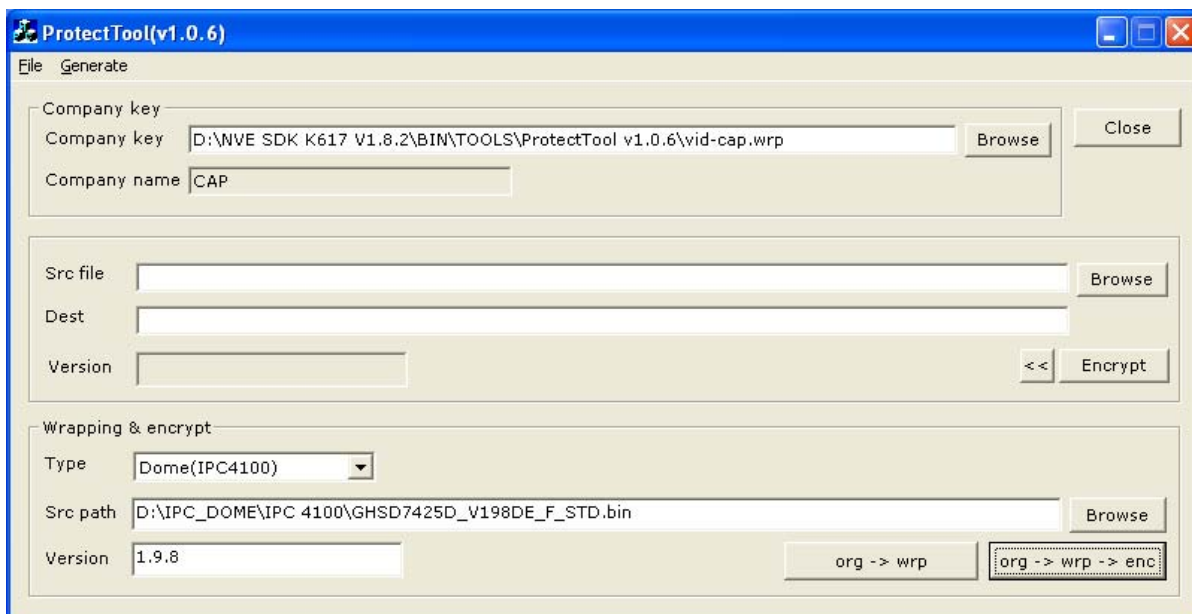
The following example is updating the dome firmware of IPC 4100.

Step 1. Encrypting the Customized IPC 4100 dome binary file.

1. Launch the Protect Tool
2. Click the >> button.

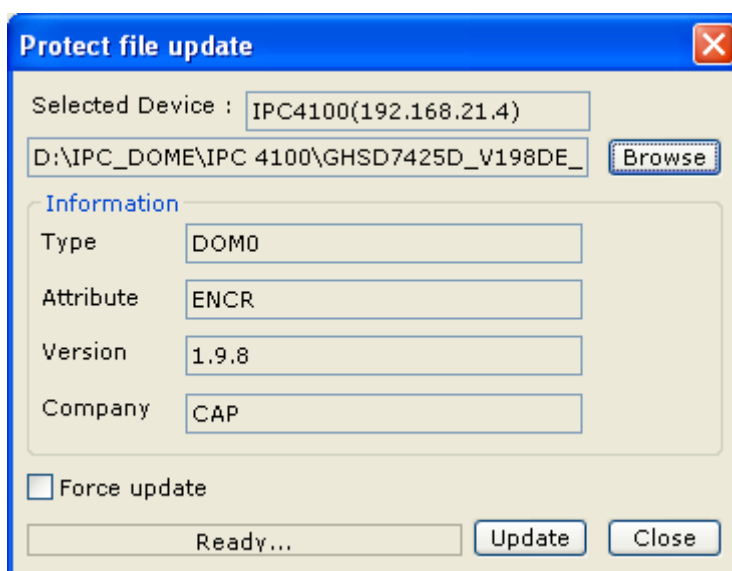


3. Select Type as Dome (IPC4100).
4. Select the dome firmware of IPC 4100 using *Browse*.
5. Type the version. We specify 1.9.8.
6. Click the *org-> wrp->enc*.



Step 2. Updating the IPC 4100 dome firmware with Protect update.

1. Launch IPAdminTool
2. Select the IPC 4100 which you want to update.
3. Click the *System->Protect update*. Protect file update dialog is popped up.
4. Select the encrypted dome firmware of IPC 4100 using *Browse*.



5. Click the *Update* button.

The dome firmware updating takes about 3 minutes.

After clicking Update button, IPC runs in update mode. You cannot connect IPC through web page until updating is finished. However, if you connect IPC4100's analog output port to the analog monitor, you can see updating screen as the following picture.



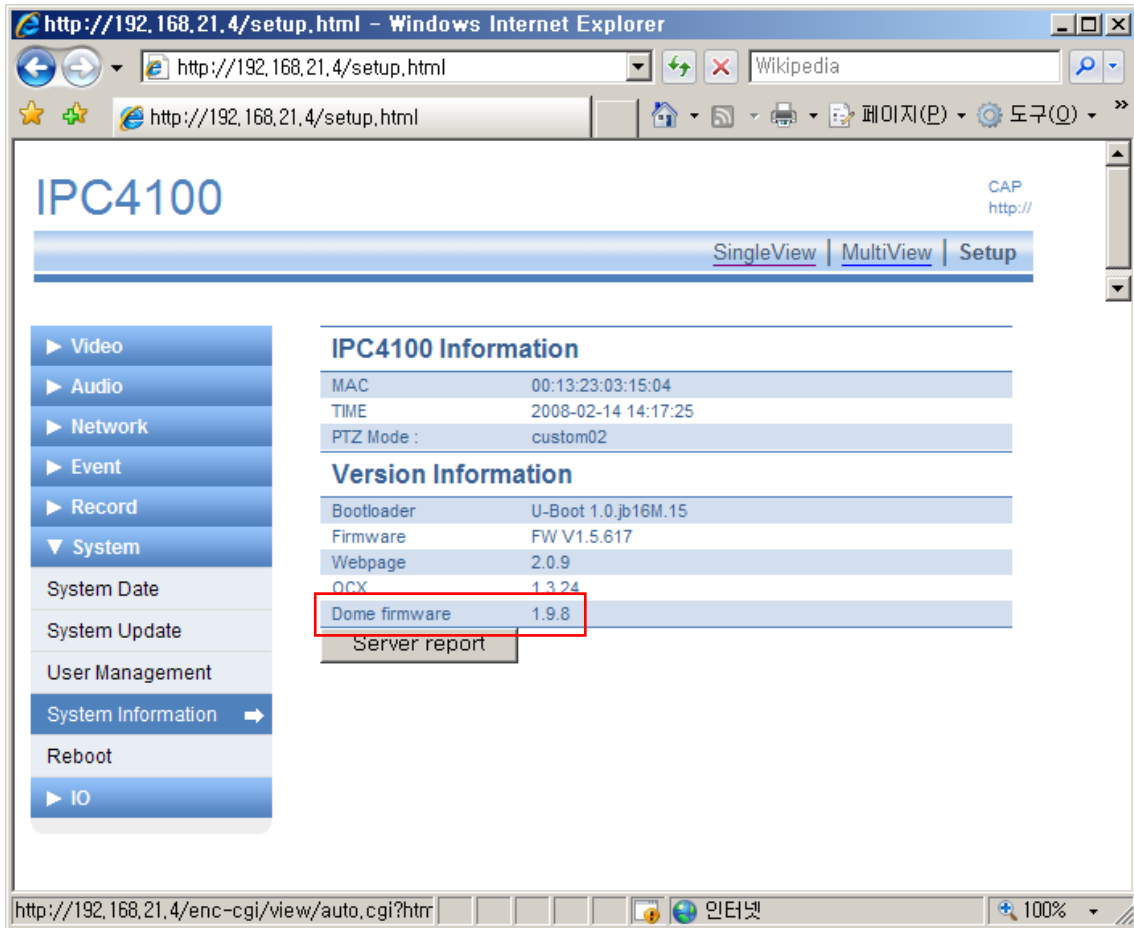
When updating is completed, the message box that shows “Dome update completed” appears.



Reboot IPC camera after updating the dome firmware is finished.

3. Verifying the dome firmware version

You can check the dome firmware version at the web page as below.



Revision History

Revision	Date	Description
A	2006-10-25	Created.
B	2008-02-14	Modified. – Add to dome firmware update higher than K600.
C	2008-04-18	Deleted older image file which is not consistent with the explanation